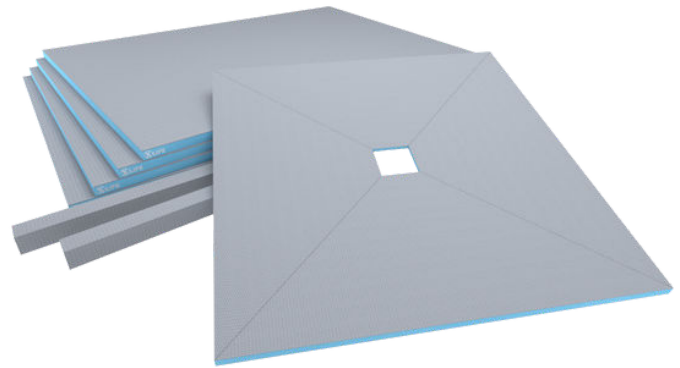




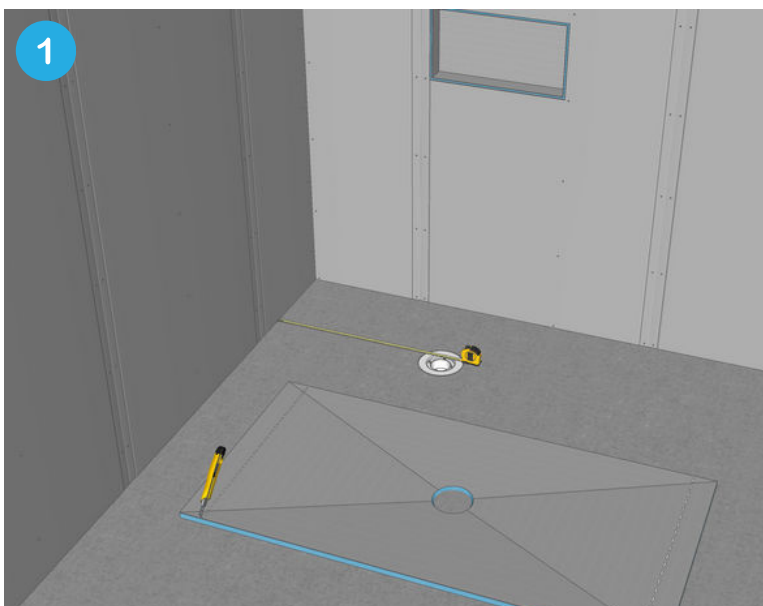
Installation Manual - SHOWER BASE

IMPORTANT: DO NOT use solvent based adhesives with this product.



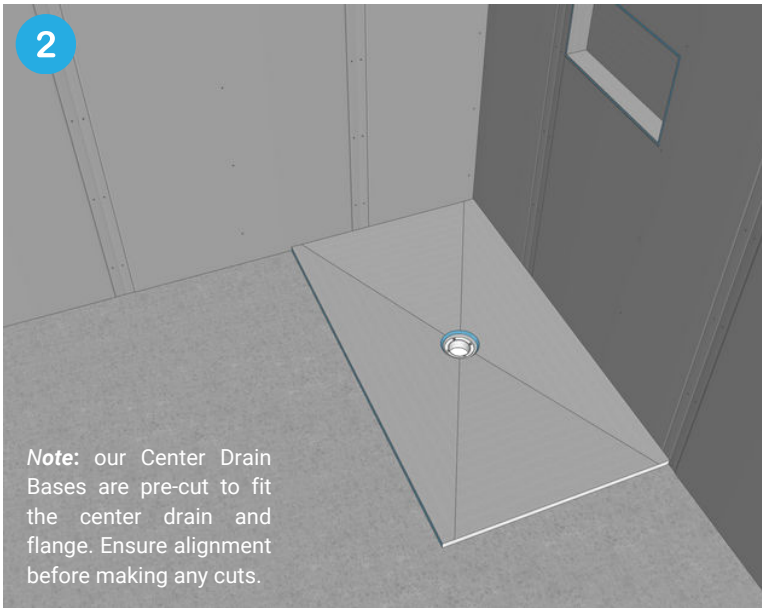
Prior to beginning, ensure your plumbing is correctly installed, the waste flange is securely attached, verify the levelness and sturdiness of the floor and then proceed by eliminating any dust and applying a primer to the floor.

Please follow these steps:



Measure the designated area

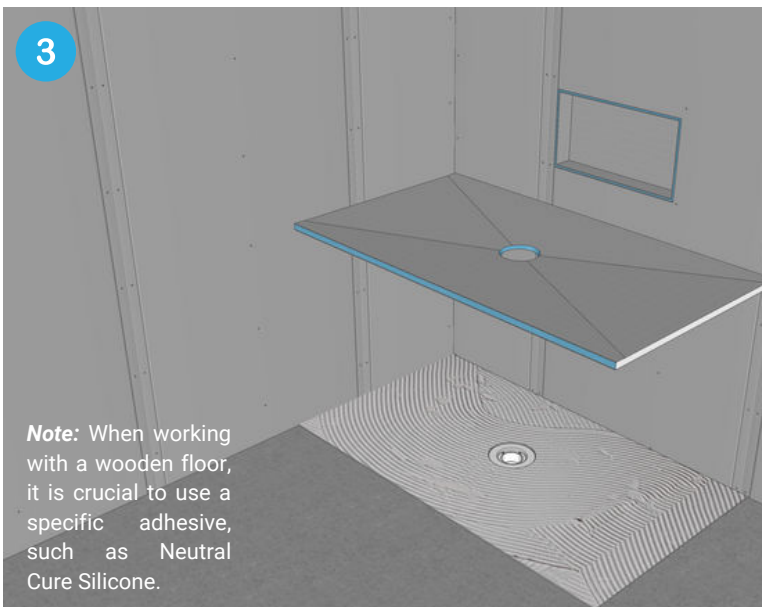
For a precise fit, measure the designated area, accounting for the allocated space for the tray. If necessary, trim the shower tray with a knife to match the measurements.



Note: our Center Drain Bases are pre-cut to fit the center drain and flange. Ensure alignment before making any cuts.

Position the Shower Base Tray

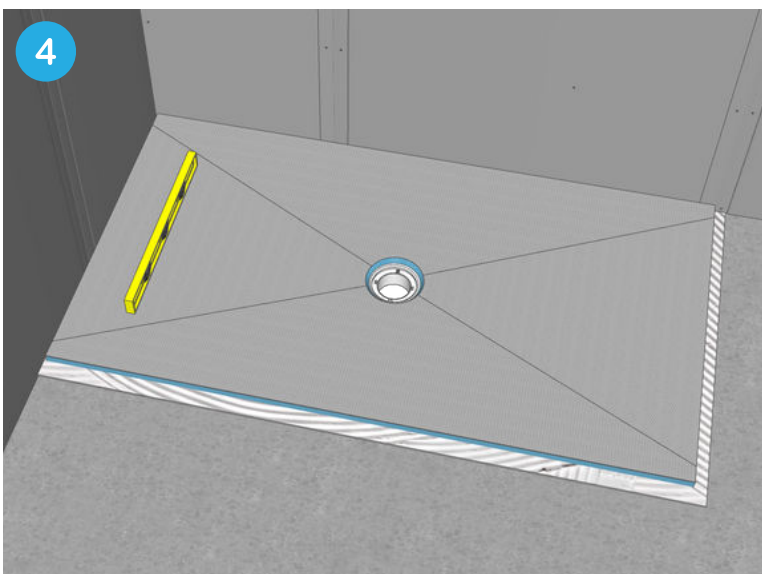
Position the shower base in its specified location and ensure proper alignment of the tray, making any necessary adjustments to the corners and edges for a flawless fit.



Note: When working with a wooden floor, it is crucial to use a specific adhesive, such as Neutral Cure Silicone.

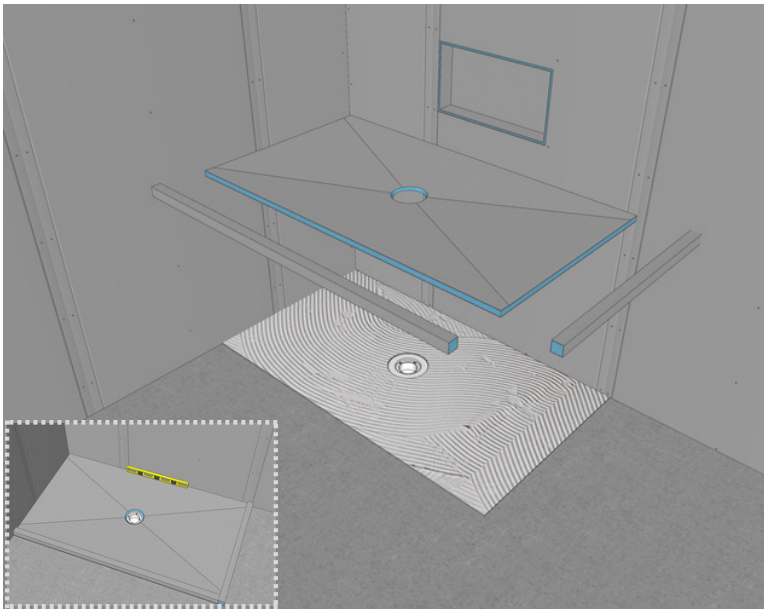
Apply adhesive on the floor

On concrete or tile slate floor, apply your standard tile adhesive (preferably with a 10mm notch trowel), extending across the floor, ensuring complete coverage.



Install the Shower Base

Position the shower base in its designated location and firmly press it down to establish a secure and strong bond with the underlying surface.



To achieve the **Raised Shower** configuration, please follow steps 1 through 4 and incorporate the **Hob/Curb** during the conclusive step.

5 **Apply a Waterproof Membrane**

Utilize a waterproofing product, ensuring uniform application over the entire surface of the shower base, flange, and walls. (Ensure to closely follow the manufacturer's provided guidelines).

6 **Tile the Shower Base**

Once the waterproofing has fully cured, you can proceed with tiling the shower using standard tiling techniques.

7 **Install the Drain**

Following the completion of tiling, fit the drain in its designated location, and your installation is finished.

Important Note: Please note that this guide provides general installation instructions, but there are various factors that may necessitate adjustments to the installation method.